

SARS-COV-2 Spike RBD Protein

Cat. No. COV-VM3BD

Description

Source	Recombinant SARS-COV-2 Spike RBD Protein is expressed from HEK293 with mFc (IgG1) tag at the C-Terminus. It contains Arg319-Asn532.
Accession	QHD43416.1
Molecular Weight	The protein has a predicted MW of 49.7 kDa. Due to glycosylation, the protein migrates to 60-70 kDa based on Tris-Bis PAGE result.
Endotoxin	Less than 1EU per μg by the LAL method.
Purity	> 95% as determined by Tris-Bis PAGE > 95% as determined by HPLC

Formulation and Storage

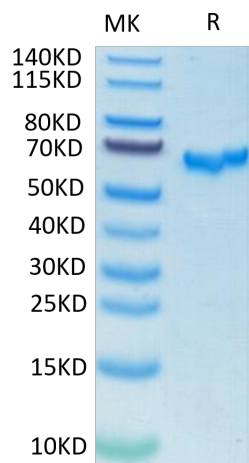
Formulation	Lyophilized from 0.22 μm filtered solution in PBS (pH 7.4). Normally 8% trehalose is added as protectant before lyophilization.
Reconstitution	Centrifuge the tube before opening. Reconstituting to a concentration more than 100 $\mu\text{g}/\text{ml}$ is recommended. Dissolve the lyophilized protein in distilled water.
Storage	-20 to -80°C for 12 months as supplied from date of receipt. -20 to -80°C for 3-6 months in unopened state after reconstitution. 2-8°C for 2-7 days after reconstitution. Recommend to aliquot the protein into smaller quantities for optimal storage. Please minimize freeze-thaw cycles.

Background

The spike protein (S) of coronavirus (CoV) attaches the virus to its cellular receptor, angiotensin-converting enzyme 2 (ACE2). A defined receptor-binding domain (RBD) on S mediates this interaction. The S protein plays key parts in the induction of neutralizing-antibody and T-cell responses, as well as protective immunity.

Assay Data

Tris-Bis PAGE



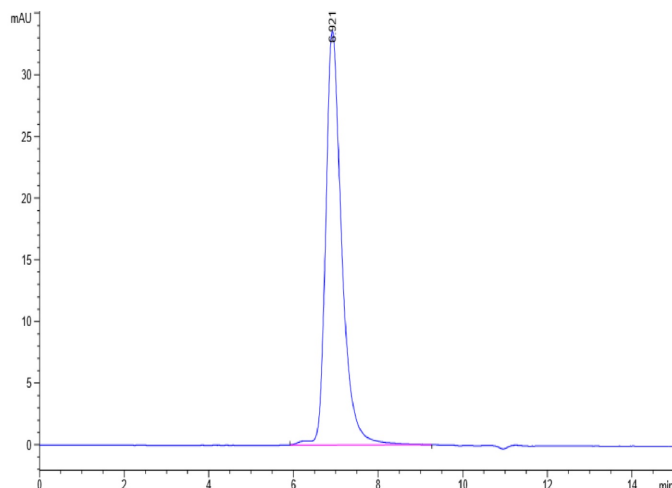
SARS-COV-2 Spike RBD on Tris-Bis PAGE under reduced condition. The purity is greater than 95%.

SEC-HPLC

SARS-COV-2 Spike RBD Protein

Cat. No. COV-VM3BD

Assay Data

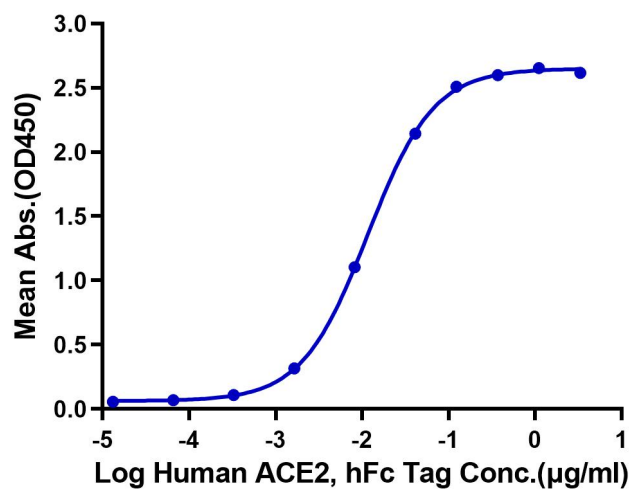


The purity of SARS-COV-2 Spike RBD is greater than 95% as determined by SEC-HPLC.

ELISA Data

SARS-COV-2 Spike RBD, mFc Tag ELISA

0.05 μ g SARS-COV-2 Spike RBD, mFc Tag Per Well



Immobilized SARS-COV-2 Spike RBD at 0.5 μ g/ml (100 μ l/Well). Dose response curve for Human ACE2, hFc Tag with the EC₅₀ of 11.6ng/ml determined by ELISA.